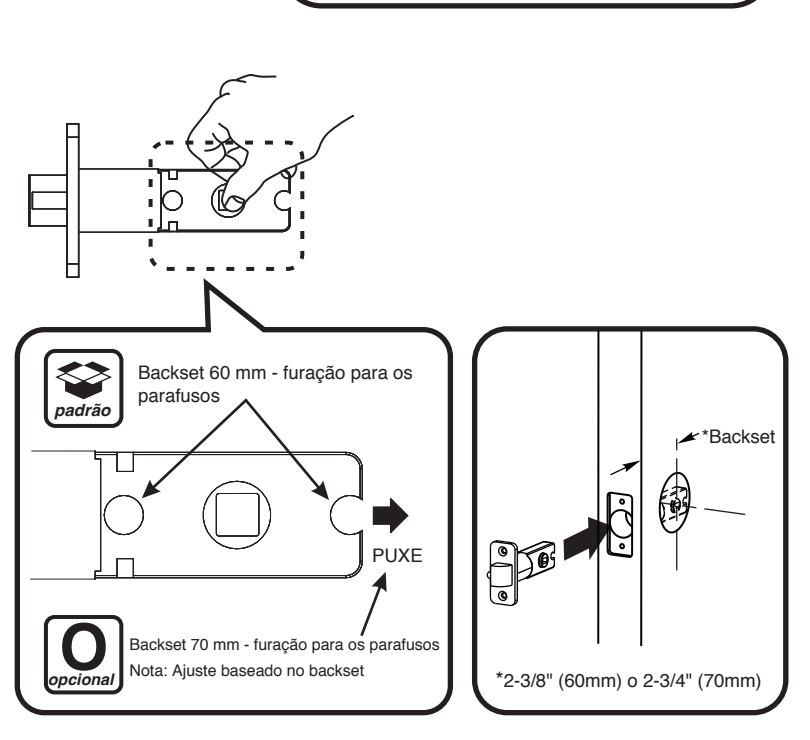
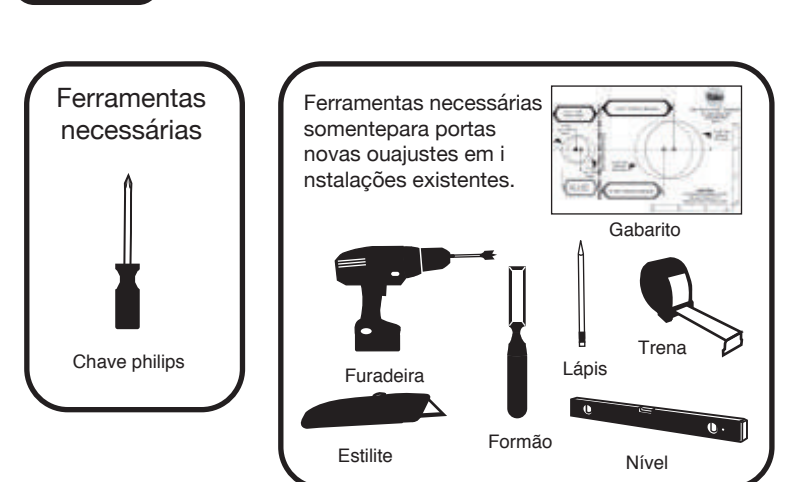
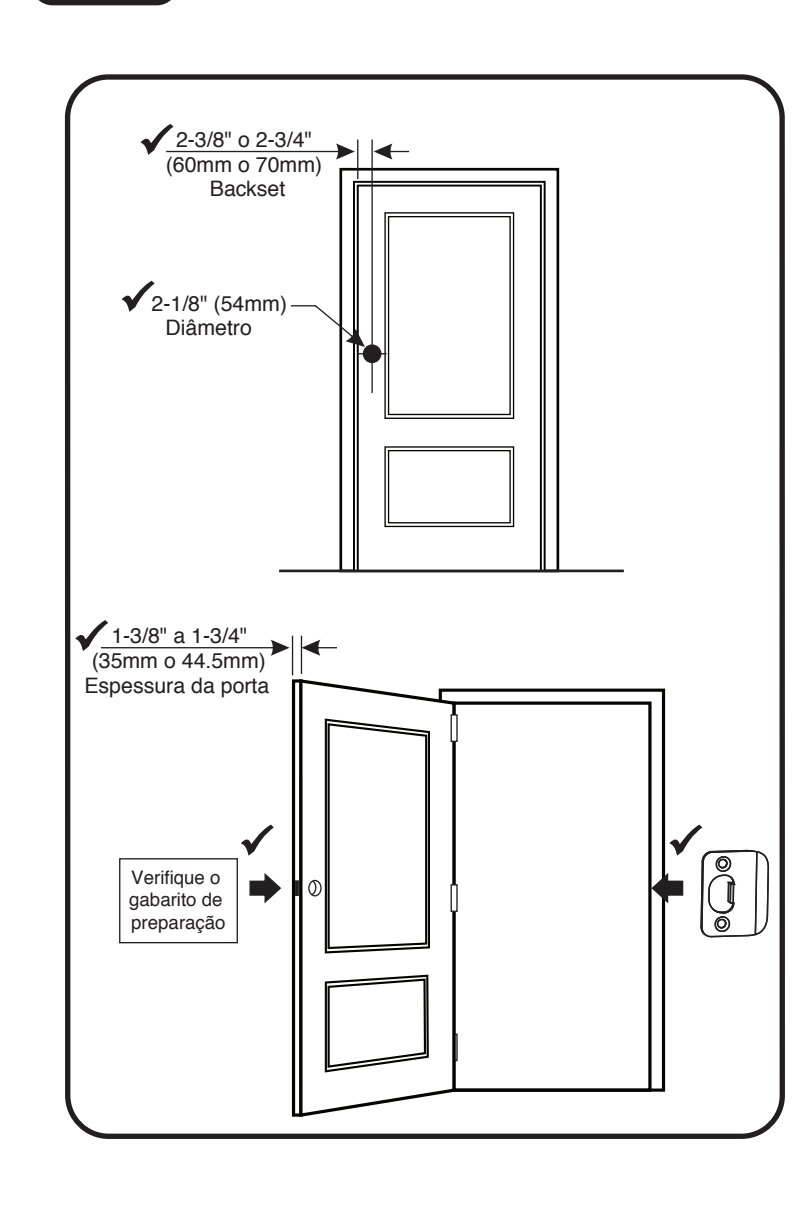


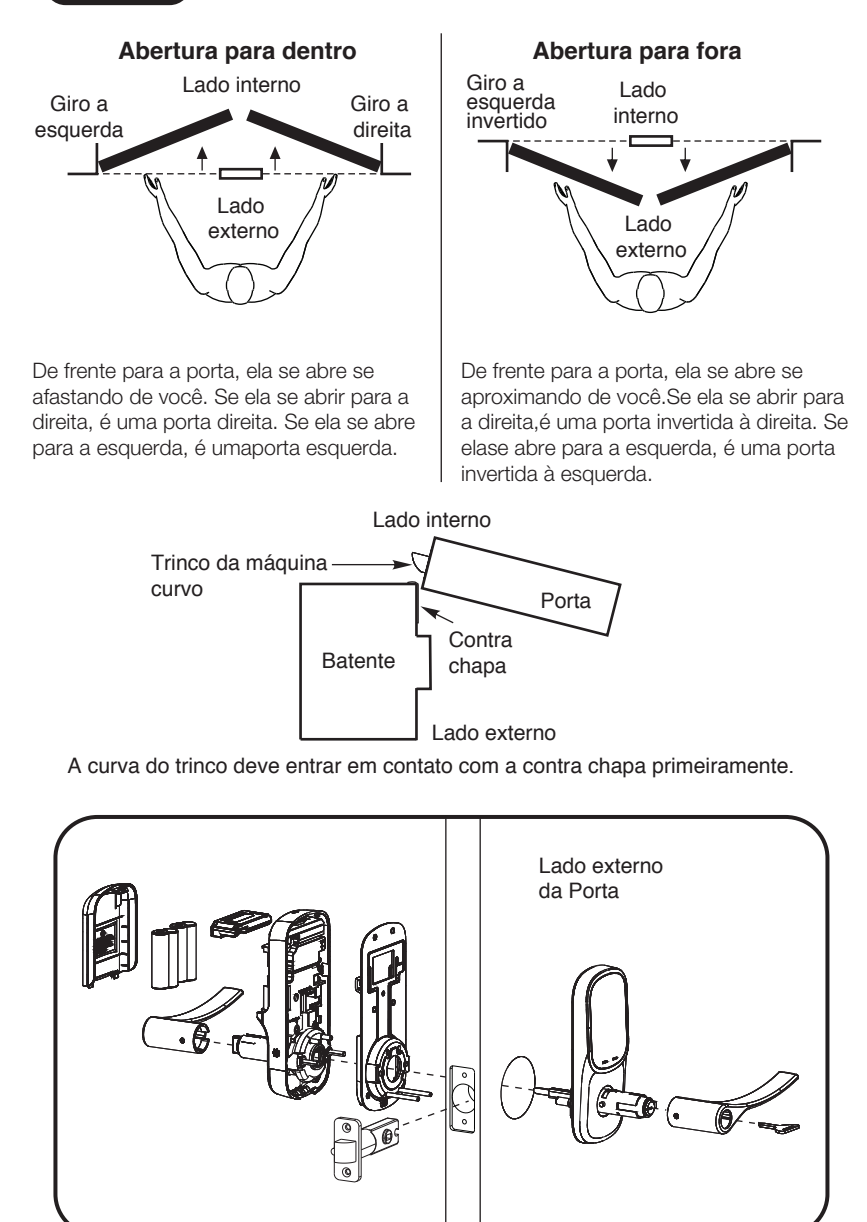
### Preparação para a instalação



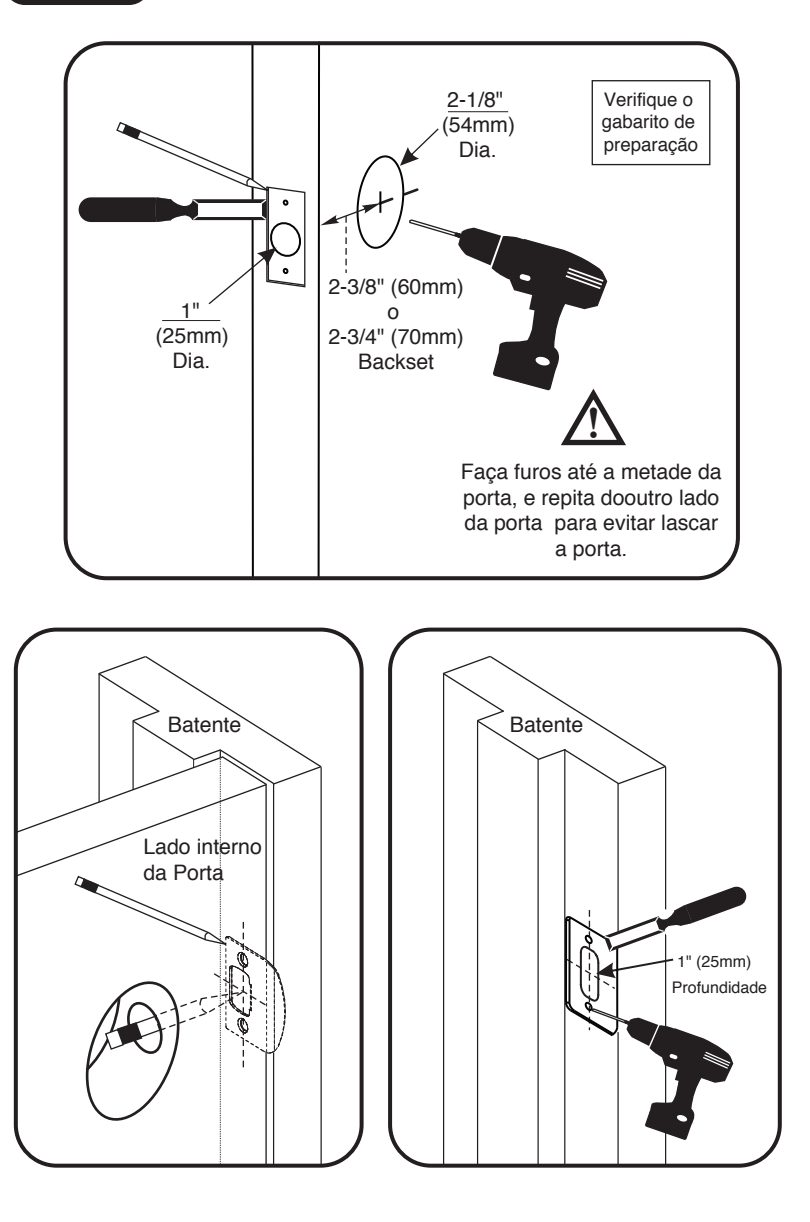
### Verificação das medidas



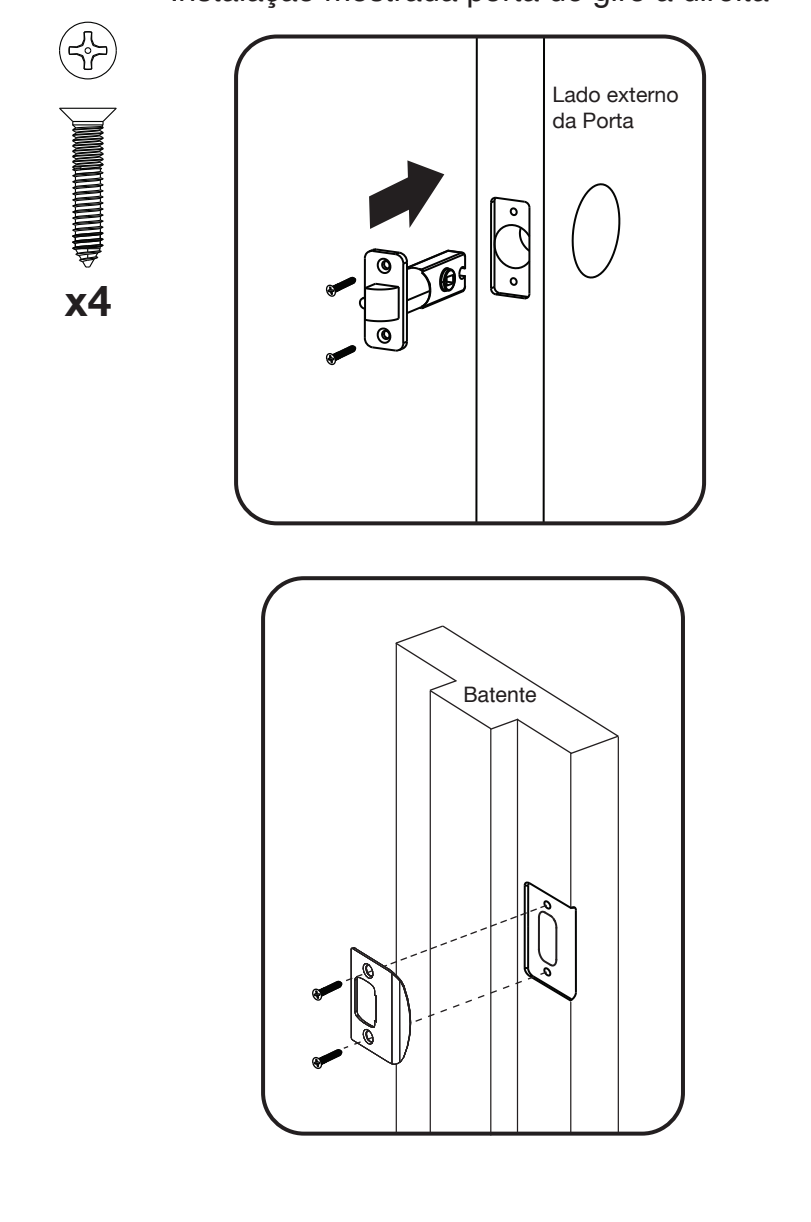
### Determinando o sentido de abertura da porta



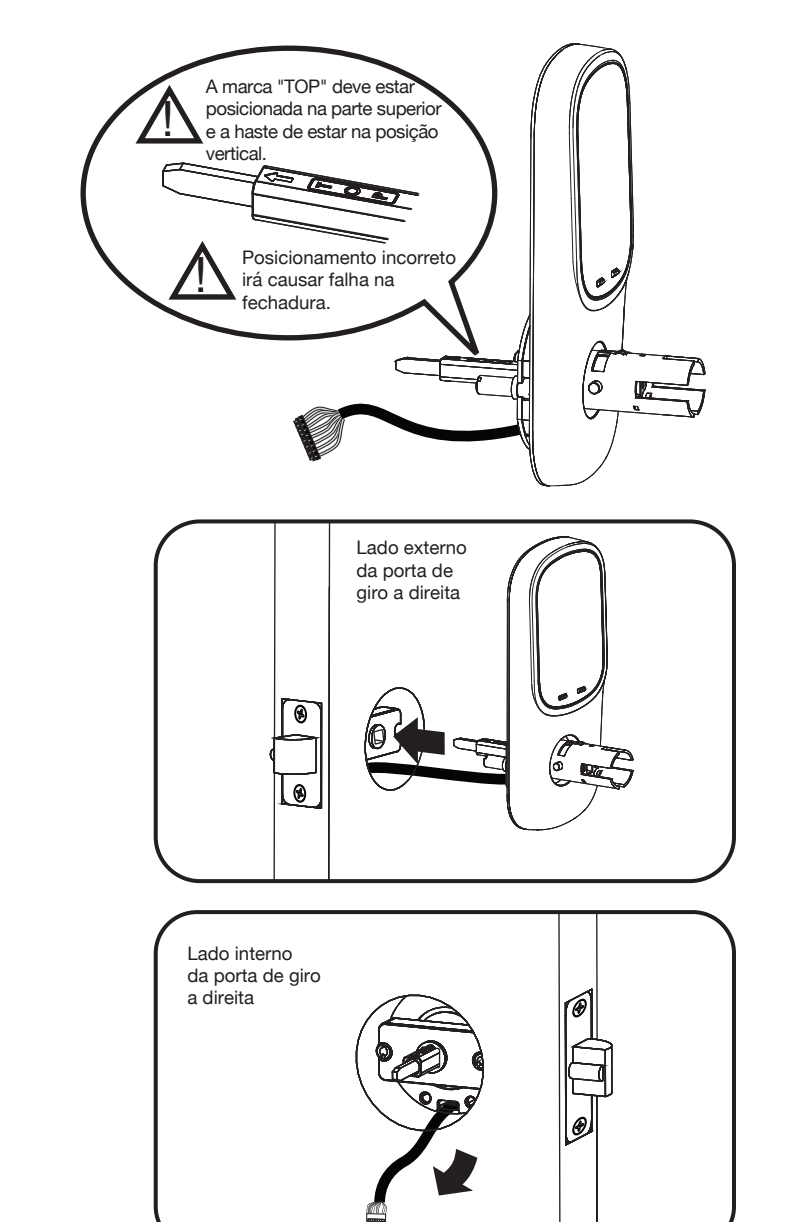
### Preparando Porta & Batente



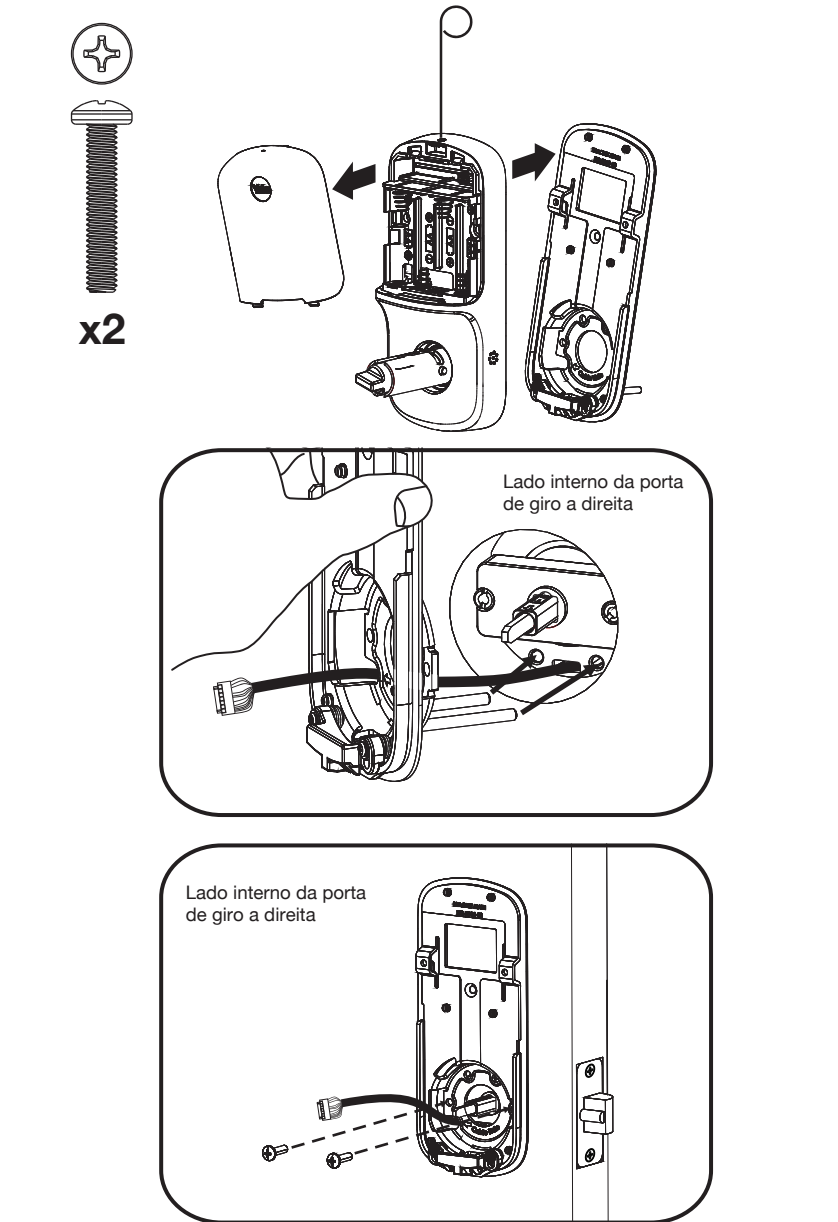
### 1 Instalação da Máquina da Fechadura e da Contra Chapa



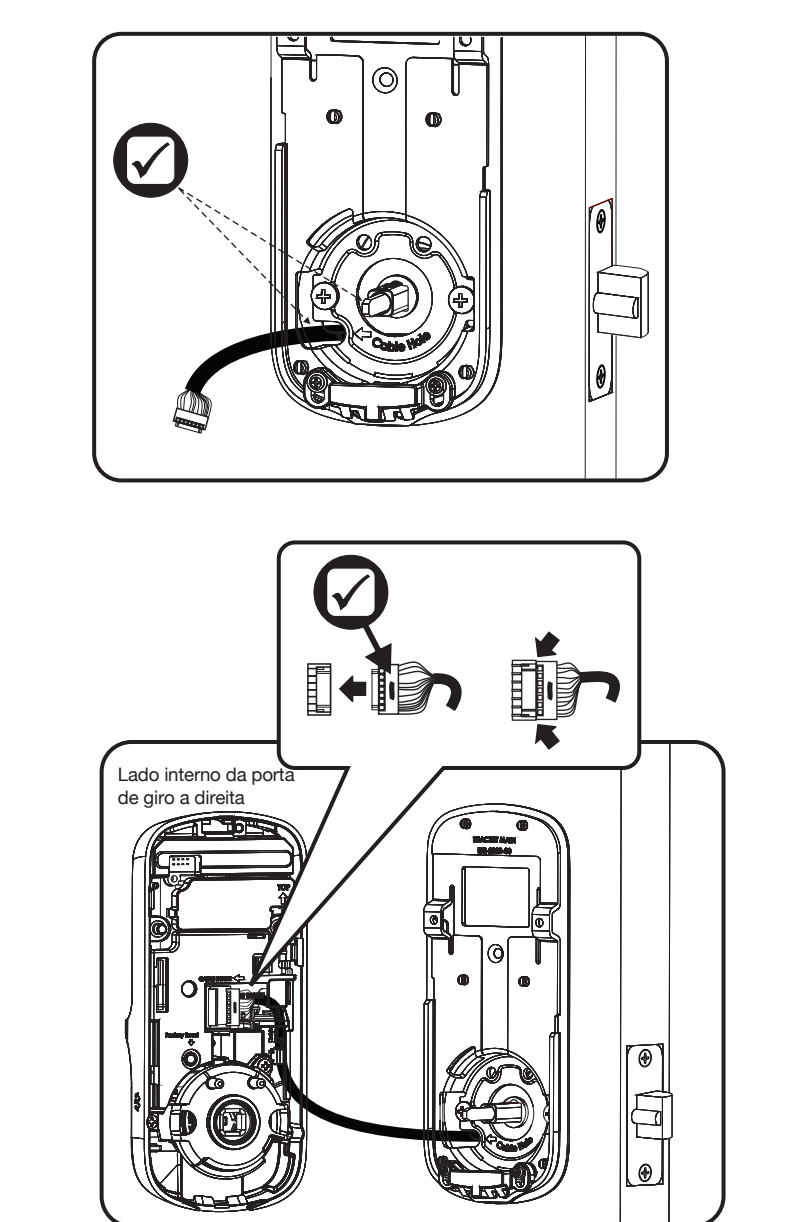
### 2 Instalando o display touchscreen



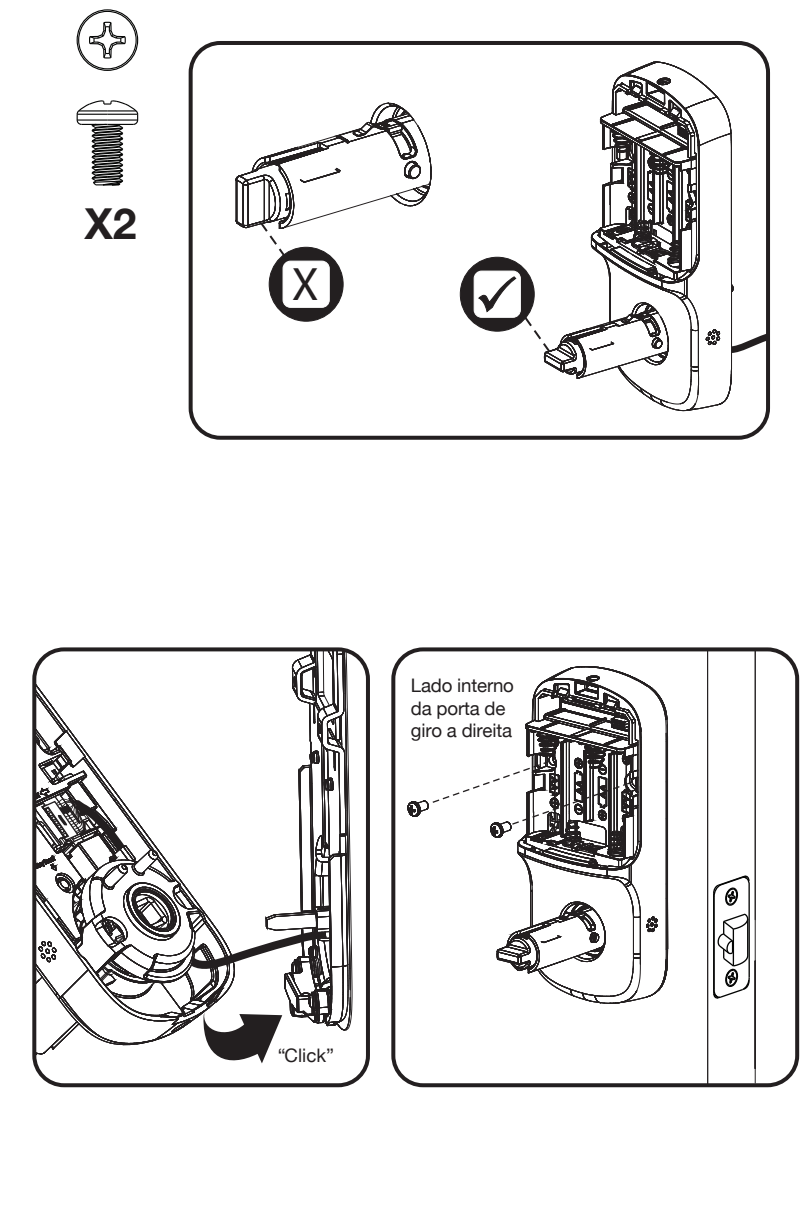
### 3 Instalação da placa de montagem interna



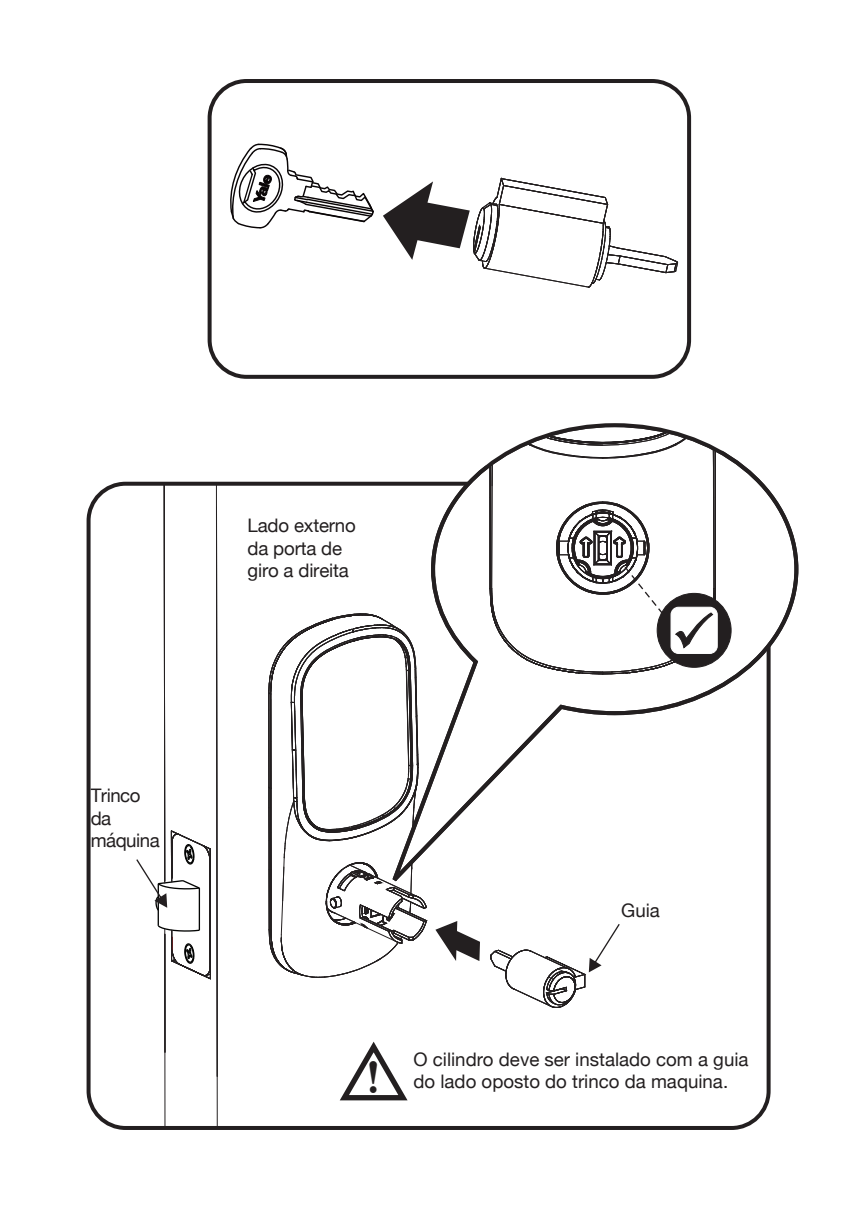
### 4 Conectando o conector do cabo



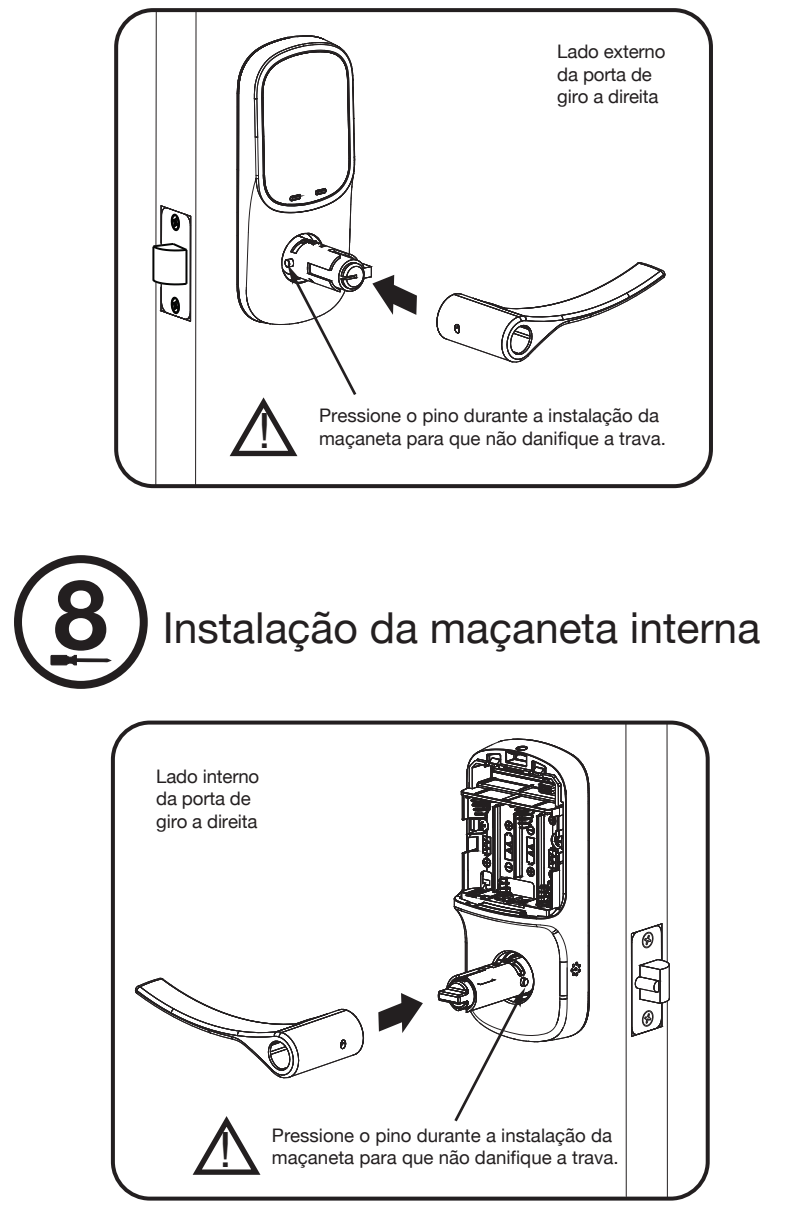
### 5 Instalação da parte interna da fechadura



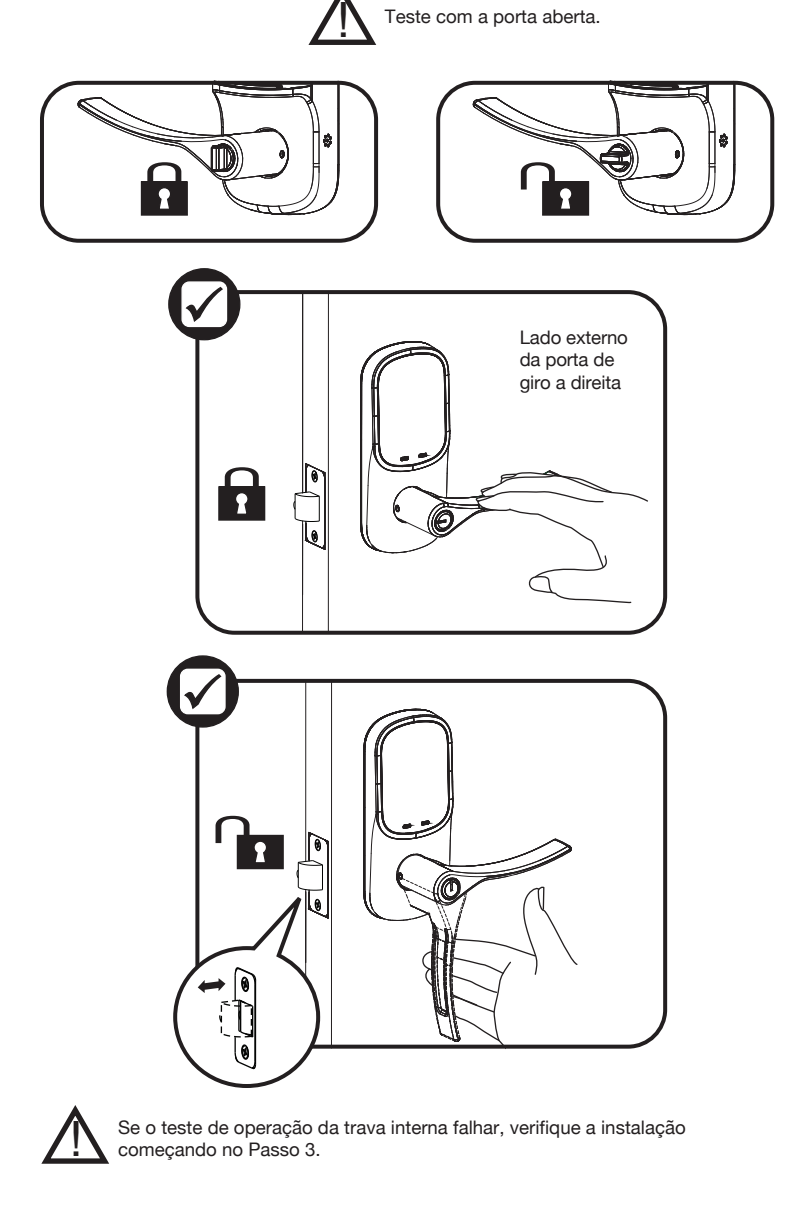
### 6 Instalação do cilindro no lado externo



### 7 Instalação da maçaneta externa



### Testando a operação da trava interna



### Instalando o módulo de comunicação opcional

